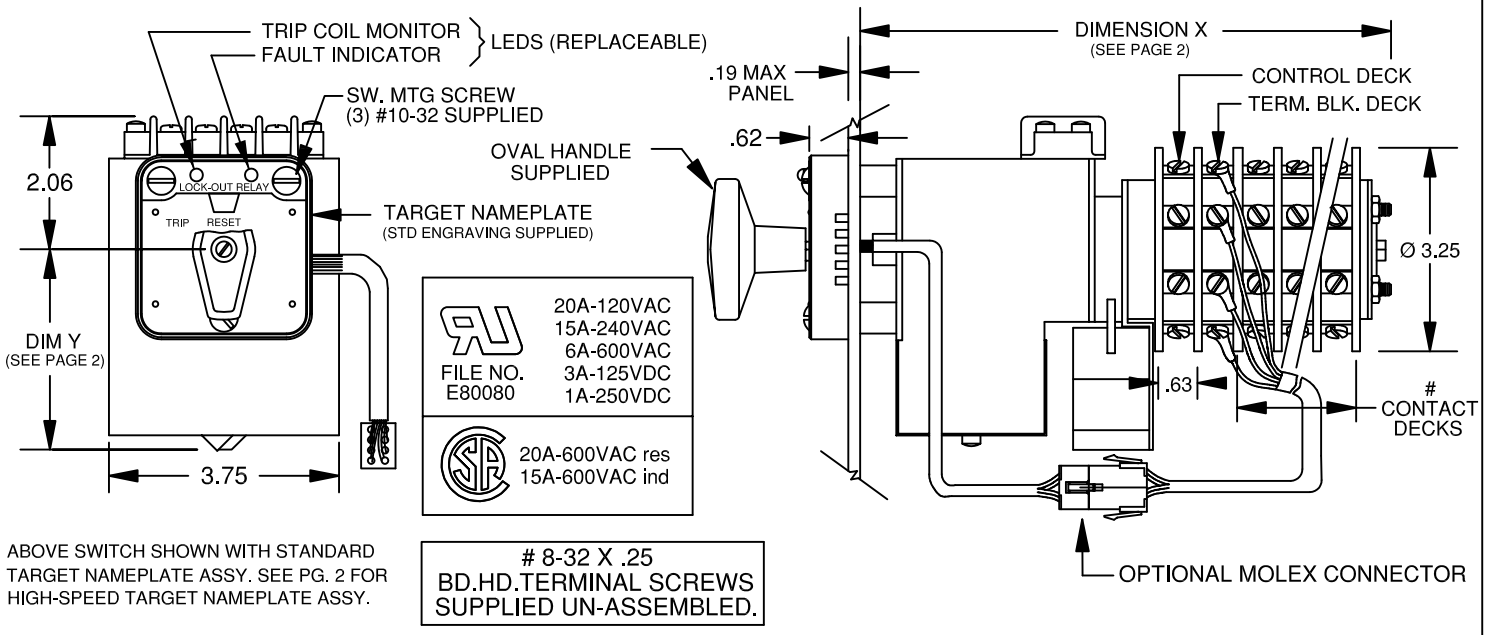




**ELECTROSWITCH**  
 UNIT OF ELECTRO SWITCH CORP.  
 WEYMOUTH, MASSACHUSETTS 02188  
 TEL: (781)335-5200 FAX: (781)335-4253

# STANDARD ELECTRIC RESET LOCKOUT RELAY

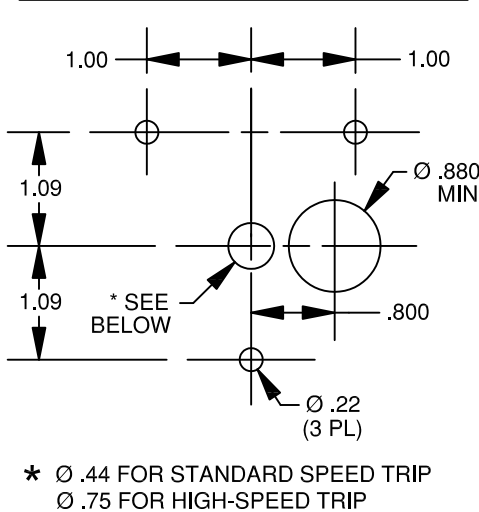
## 78P-ERLOR



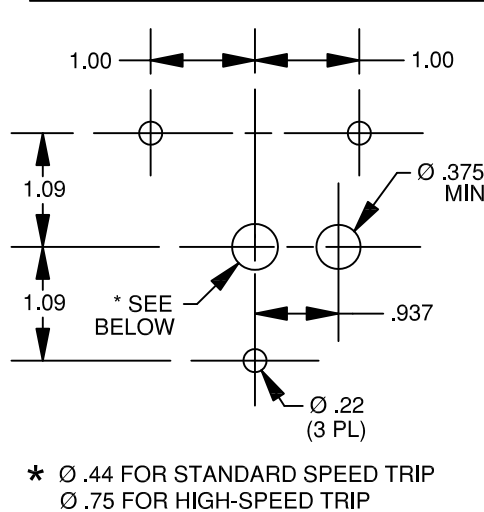
### STANDARD PART NUMBERING SYSTEM

SWITCH TYPE	NAMEPLATE CONFIG (SINGLE LETTER)	LED ARRANGEMENT (THREE LETTERS)	MOLEX CONNECTOR (SINGLE LETTER)	CIRCUIT TYPE (SINGLE DIGIT)	NO. OF DECKS (SINGLE DIGIT)	TRIP COIL TYPE (SINGLE LETTER)	RESET COIL TYPE (SINGLE LETTER)
STANDARD LOCK-OUT RELAY P/N PREFIX	A - 1 LED, 48/125VDC B - 2 LEDs, 48/125VDC J - 1 LED, 24VDC K - 2 LEDs, 24VDC Y - 2 LEDs, 250VDC Z - 1 LED, 250 VDC	1ST LTR - LEFT LED 2ND LTR - X (DEFAULT) 3RD LTR - RIGHT LED  A - AMBER B - BLUE G - GREEN R - RED W - WHITE X - NO LED	M - INCLUDE MOLEX CONNECTOR X - EXCLUDE MOLEX CONNECTOR (DIRECT WIRE)	2 - STANDARD SPEED TRIP ELECTRIC RESET 3 - HIGH-SPEED TRIP * ELECTRIC RESET 4 - STANDARD SPEED TRIP INSTANT SELF-RESET 5 - STANDARD SPEED TRIP TIME-DELAY SELF-RESET 6 - HIGH SPEED TRIP * INSTANT SELF-RESET 7 - HIGH SPEED TRIP * TIME-DELAY SELF-RESET * SEE PG. 2 REFER TO TECH PUB LOR-1 FOR CIRCUIT SPECS.	3 - 3 DECKS 5 - 5 DECKS 7 - 7 DECKS * 8 - 8 DECKS  * 7 DECKS AVAIL. ON TIME-DELAY CIRCUITS ONLY  10 DECKS AVAIL. ON HIGH-SPEED TRIP CIRCUITS (CALL FACTORY)	A - 24 VDC B - 24 VDC C - 48 VDC D - 125 VDC E - 125 VDC F - 250 VDC G - 125 VDC H - 250 VDC K - 125 VDC  SEE PG. 2 FOR TRIP COIL SPECIFICATIONS	A - 24 VDC C - 48 VDC D - 125 VDC F - 250 VDC  SEE PG. 2 FOR RESET COIL SPECIFICATIONS

#### PANEL DRILLING DIMENSIONS W/ MOLEX



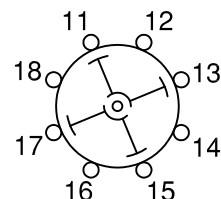
#### PANEL DRILLING DIMENSIONS NO MOLEX



#### CONTACTS

DECK 1	POSITION			
	TRIP	RESET		
11	○ — — ○	13		X
12	○ — — ○	18	X	
15	○ — — ○	17		X
14	○ — — ○	16	X	

REMAINING DECKS SAME AS DECK 1 EXCEPT FOR TERMINAL NUMBERS



MADE BY: SPB  
 APPR BY: MK

DATE: 01-30-19  
 DATE: 01-30-19

CALL FACTORY FOR CUSTOM OPTIONS OR CONFIGURATIONS NOT DETAILED ABOVE

SHEET 1 OF 2

REVISIONS:  
 0

REV 0



**TRIP COIL SPECIFICATIONS**

	COIL A	COIL B	COIL C	COIL D	COIL E
NOMINAL VOLTAGE:	24 VDC	24 VDC	48 VDC	125 VDC	125 VDC
OPERATING RANGE:	10-40 VDC	18-50 VDC	24-70 VDC	30-140 VDC	45-140 VDC
THRESHOLD:	6 VDC (MIN)	9 VDC (MIN)	12 VDC (MIN)	16 VDC (MIN)	23 VDC (MIN)
COIL RESISTANCE:	3.3 Ω	7.7 Ω	13.0Ω	27.0Ω	50.0Ω
COIL BURDEN @ NOMINAL V:	7.3 AMPS	3.1 AMPS	3.7 AMPS	4.6 AMPS	2.5 AMPS

	COIL F	COIL G	COIL H	COIL K	FOR RESPONSE TIMES & ADD'L INFO REFER TO TECHNICAL PUBLICATION LOR-1
NOMINAL VOLTAGE:	250 VDC	125 VDC	250 VDC	125 VDC	
OPERATING RANGE:	70-280 VDC	90-140 VDC	180-280 VDC	100-150 VDC	
THRESHOLD:	33 VDC (MIN)	70 VDC (MIN)	140 VDC (MIN)	16 VDC (MIN)	
COIL RESISTANCE:	104.0 Ω	27.0Ω	104.0 Ω	27.0Ω	
COIL BURDEN @ NOMINAL V:	2.4 AMPS	4.6 AMPS	2.4 AMPS	4.6 AMPS	

**RESET COIL SPECIFICATIONS**

	COIL A	COIL C	COIL D	COIL F	FOR ADD'L INFORMATION REFER TO TECHNICAL PUBLICATION LOR-1
NOMINAL VOLTAGE:	24 VDC	48 VDC	125 VDC	250 VDC	
OPERATING RANGE:	19.2-28 VDC	38.4-57.6 VDC	100-150 VDC	200-275 VDC	
COIL RESISTANCE:	0.7 Ω	3.0 Ω	12.4Ω	80.6Ω	
COIL BURDEN @ NOMINAL V:	33.8 AMPS	15.9 AMPS	10.1 AMPS	3.1 AMPS	

**REFERENCE DIMENSIONS**

DIMENSION X (DEPTH BEHIND PANEL)

DIMENSION Y (MAX)

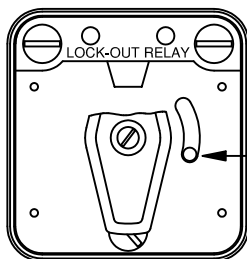
NO. OF DECKS	DIMENSION X (DEPTH BEHIND PANEL)			DIMENSION Y (MAX)	
	HIGH-SPEED TRIP	STANDARD TRIP	TIME-DELAY RESET	TRIP COIL A - 3.93"	TRIP COIL F - 3.93"
3	9.0"	9.0"	9.8"	TRIP COIL B - 3.93	TRIP COIL G - 4.06"
5	10.4"	10.4"	11.2	TRIP COIL C - 3.93	TRIP COIL H - 4.06"
7	-	-	13.7"	TRIP COIL D - 3.93	TRIP COIL K - 3.93"
8	12.3"	12.3"	-	TRIP COIL E - 3.93	
10	13.5"	-	-		

**HIGH-SPEED TRIP TARGET NAMEPLATE ASSY**

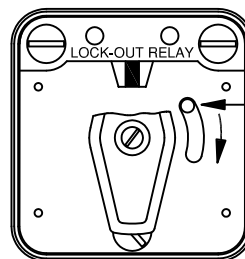
THE INFORMATION BELOW APPLIES TO HIGH-SPEED TRIP UNITS ONLY.

TARGET & HANDLE SHOWN  
IN RESET POSITION.

TARGET & HANDLE SHOWN  
IN TRIP POSITION.



MANUAL RESET  
MEMORY TARGET



SLIDE DOWN  
TO RESET MEMORY-  
TARGET AFTER RESET  
OPERATION. (CANNOT  
BE RESET WHILE UNIT  
IS TRIPPED)

NOTES:

- HANDLE IS DECOUPLED FROM SWITCH DURING TRIP OPERATION ON HIGH-SPEED UNITS TO ALLOW FOR HIGH-SPEED TRIPPING. HANDLE ENGAGES WHEN MANUALLY RESET (45° CW) AND THEN RETURNS TO THE NORMAL (0°) POSITION TO AWAIT TRIP COMMAND.
- FOR NAMEPLATE CONFIGURATIONS J, K, Y, & Z, NAMEPLATE IS SUPPLIED WITHOUT A MECHANICAL TARGET ON HIGH-SPEED TRIP UNITS.

MADE BY: **SPB**  
 APPR BY: **MK**

DATE: 01-30-19  
 DATE: 01-30-19

CALL FACTORY FOR CUSTOM OPTIONS OR  
 CONFIGURATIONS NOT DETAILED ABOVE

SHEET 2 OF 2

REV  
**0**

REVISIONS: