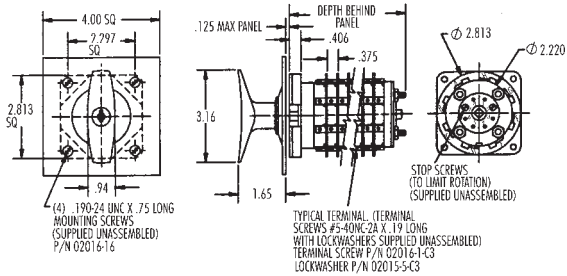




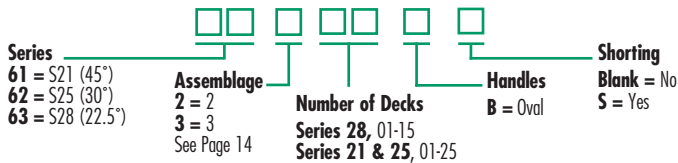
## Key Lock Handle: Series 21, 24, 25, 28

- Locks in Vertical Position
- Key Removable when Locked
- All Units have Same Key Code
- 4" Square Black Nameplate



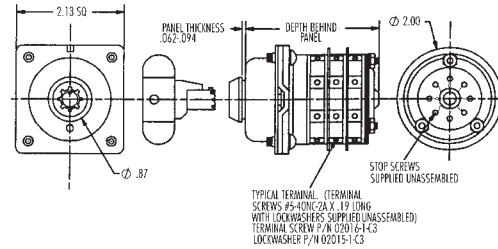
Note: For Series 24 Ordering Information – Consult Factory

### Ordering Information



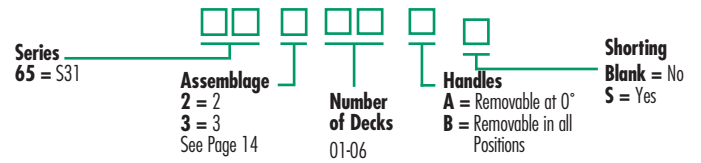
## Key Operated Handle: Series 31

- Key Removable in 0° or all Positions
- All Series 31 Key Operated Switches are Single Hole Mount



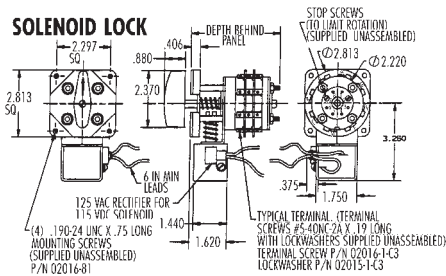
Note: Requires Special Mounting Configuration – Consult Factory

### Ordering Information



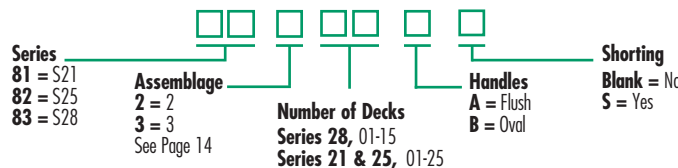
## Solenoid Lock Handle: Series 21, 24, 25, 28

- Switch Can Be Turned Only when Solenoid is Energized (110-125VAC Input)
- Consult Factory for Switches that can be Turned when Solenoid is De-energized



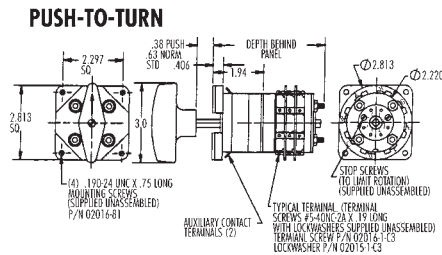
Note: For Series 24 Ordering Information – Consult Factory

### Ordering Information



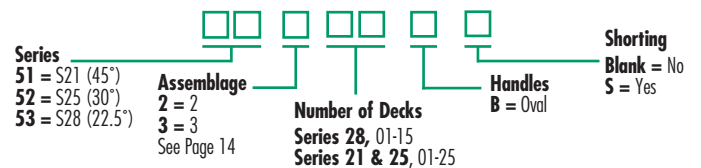
## Push-to-Turn Switches: Series 21, 24, 25, 28

- Must Push approx. .25" (15 lb.) to Turn
- Push opens a NC Contact Allowing Switching at no Load or between Positions Without Activating Intermediate Positions



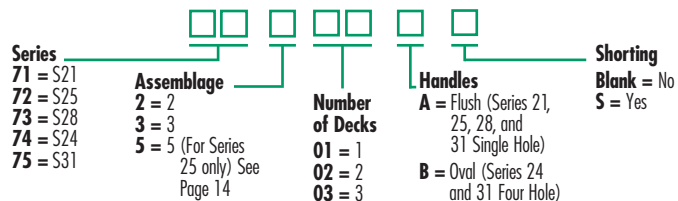
Note: For Series 24 Ordering Information – Consult Factory

### Ordering Information



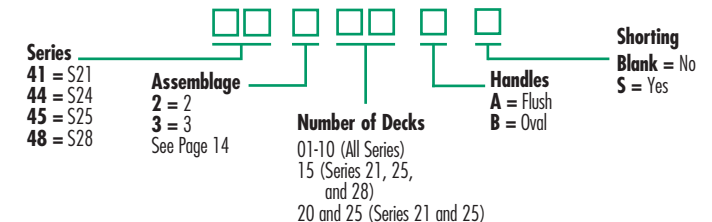
## Spring Return Switches (Momentary Action)

### Ordering Information



## Waterproof Mount Switches

### Ordering Information



Note: For Series 31, use standard Tap and Selector Switches, plus seal-nut #02017-8  
For Waterproof Mount add 1/8" to Depth Behind Panel, on Series 21, 25, and 28.  
For Series 24 add 1/8".